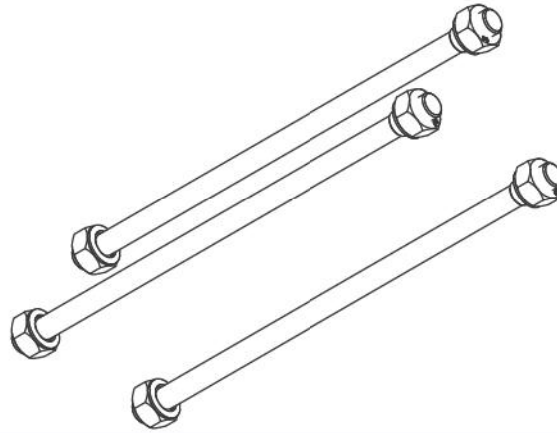


**KIT TIRANTI PER INTERFACCIA IBW05...**  
**TIE ROD KIT FOR INTERFACE IBW05...**  
**ZUGANKER FÜR SCHNITTSTELLE IBW05...**



**SERRAGGIO  
 TORQUE  
 ANZUGSMOMENT**  
 18 ± 1 Nm

I codici riportati in tabella sono validi per configurazioni che impiegano testate di entrata : TE050A - TE050B - TE050C

*The codes listed in the table apply to configurations using inlet covers: TE050A - TE050B - TE050C*

Die in der Tabelle aufgeführten Bestellschlüssel sind gültig für Konfigurationen, die folgende Eingangselemente verwenden: TE050A - TE050B - TE050C

**PER TESTATE DI ENTRATA: TE050A - TE050B**  
**FOR INLET COVERS: TE050A - TE050B**  
**FÜR EINGANGSELEMENTE: TE050A - TE050B**

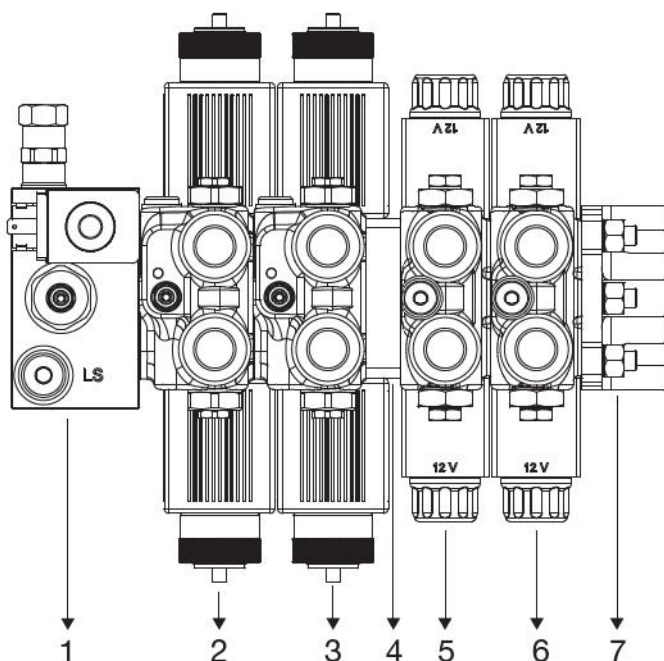
CODICE MODEL BEZEICHNUNG	L		CODICE MODEL BEZEICHNUNG	L		CODICE MODEL BEZEICHNUNG	L	
	mm	inc		mm	inc		mm	inc
DO590096012	96	3.78"	DO590224012	224	8.82"	DO590368012	368	14.49"
DO590107012	107	4.21"	DO590236012	236	9.29"	DO590369012	369	14.53"
DO590124012	124	4.88"	DO590244012	244	9.61"	DO590380012	380	14.96"
DO590134012	134	5.28"	DO590248012	248	9.76"	DO590392012	392	15.43"
DO590140012	140	5.51"	DO590254012	254	10.00"	DO590414012	414	16.30"
DO590160012	160	6.30"	DO590266012	266	10.47"	DO590424012	424	16.69"
DO590165012	165	6.50"	DO590272012	272	10.71"	DO590428012	428	16.85"
DO590171012	171	6.73"	DO590281012	281	11.06"	DO590431012	431	16.97"
DO590175012	175	6.89"	DO590284012	284	11.18"	DO590454012	454	17.87"
DO590180012	180	7.09"	DO590294012	294	11.57"	DO590466012	466	18.35"
DO590186012	186	7.32"	DO590300012	300	11.81"	DO590468012	468	18.43"
DO590194012	194	7.64"	DO590308012	308	12.13"	DO590503012	503	19.80"
DO590200012	200	7.87"	DO590314012	314	12.36"	DO590505012	505	19.88"
DO590207012	207	8.15"	DO590320012	320	12.60"	DO590542012	542	21.34"
DO590212012	212	8.35"	DO590339012	339	13.35"	DO590563012	563	22.17"
DO590214012	214	8.43"	DO590344012	344	13.54"	DO590579012	579	22.80"
DO590220012	220	8.66"	DO590356012	356	14.02"			

**KIT TIRANTI  
TIE ROD KIT  
ZUGANKER**

**TABELLA PER CALCOLO LUNGHEZZA KIT TIRANTI  
TABLE FOR CALCULATING TIE ROD KIT LENGTH  
TABELLE ZUR BERECHNUNG DER LÄNGE DER ZUGANKER**

CODICE MODEL BEZEICHNUNG	L mm [inch]	CODICE MODEL BEZEICHNUNG	L mm [inch]	CODICE MODEL BEZEICHNUNG	L mm [inch]	CODICE MODEL BEZEICHNUNG	L mm [inch]
TE050B	35 [1.37]	BW0500AO	37 [1.45]	PI0500	8 [0.31]	TU050A	8 [0.31]
TE050A	35 [1.37]	BW0500BO	37 [1.45]	PI0511	14 [0.55]	TU050B	37 [1.45]
TE050C	38 [1.50]	BW0511BO	37 [1.45]	PI0580	18 [0.71]	TU051A	8 [0.31]
TE051A	12 [0.47]	BW0511BP	37 [1.45]	PI0588	8 [0.31]	TU051B	8 [0.31]
TE102A	11 [0.43]	BW0511CP	46 [1.81]	PI1022	11 [0.43]	TU102A	8 [0.31]
TE103A	12 [0.47]	BW0500TO	37 [1.45]	PI1033	24.8 [0.97]	TU102B	45 [1.77]
		BW0500TM	37 [1.45]			TU103A	10 [0.39]
		BW0588TO	37 [1.45]			TU103B	10 [0.39]
		BW0588TM	37 [1.45]				
		BW1022AO	48 [1.88]				
		BW1033AO	48 [1.88]				
		BW1033CP	66 [2.66]				

**ESEMPIO  
EXAMPLE  
BEISPIEL**



1 2 3 4 5 6 7

**TE051A**

**BW0511CP**

**BW0511CP**

**PI0511**

**BW0511BO**

**BW0511BO**

**TU051A**

$$12 [0.47] + 46 [1.81] + 46 [1.81] + 14 [0.55] + 37 [1.45] + 37 [1.45] + 8 [0.31] + 8 [0.31] = \mathbf{208 [8.16]}$$

Usare codice kit tirante: Use tie rod kit code: Verwenden Sie den Bestellschlüssel DO59021401201

Nota: Con configurazioni che impiegano le testate TE051A - TE102A - TE103A aggiungere 8 mm (larghezza dado).

Con configurazioni che impiegano le testate TE050B - TE050A - TE050C aggiungere 16 mm (somma larghezza 2 dadi).

Note: With configurations using covers TE051A - TE102A - TE103A add 8 mm (nut width).

With configurations using heads TE050B - TE050A - TE050C add 16 mm (sum of width of 2 nuts).

Bemerkung: Bei Ventilzusammenstellungen, die die Eingangselemente TE051A, TE102A, TE103A verwenden, müssen 8 mm hinzugerechnet werden (Höhe der Mutter).

Bei Ventilzusammenstellungen, die die Eingangselemente TE050B, TE050A, TE050C verwenden, müssen 16 mm hinzugerechnet werden (Höhe von 2 Muttern).

PER IL CODICE KIT TIRANTI CONSULTARE LE TABELLE AL CAPITOLO SUCCESSIVO.

FOR THE TIE ROD KIT CODE SEE THE TABLES IN THE FOLLOWING CHAPTER.

FÜR DIE AUSWAHL DES BESTELLSCHÜSSELS FÜR DIE ZUGANKER SCHAUEN SIE BITTE IN DIE TABELLE DES NACHFOLGENDEN KAPITELS.



**TABELLA IDENTIFICATIVA PER CONFIGURAZIONI CHE RICHIEDONO PIASTRE INTERMEDIE**  
**IDENTIFICATION TABLE FOR CONFIGURATIONS REQUIRING INTERMEDIATE PLATES**  
**TABELLE ZUR BESTIMMUNG VON KONFIGURATIONEN, DIE ZWISCHENPLATTEN BENÖTIGEN**

		PRIMA SEZIONE			FIRST SECTION		ERSTE SEKTION						
		BW0500A0	BW0500B0	BW0511B0	BW0511BP	BW0511CP	BW0500T0	BW0500TM	BW0588T0	BW0588TM	BW1022A0	BW1033A0	BW1033CP
SEZIONE SUCCESSIVA NEXT SECTION NACHFOLGENDE SEKTION	BW0500A0	N / PI0500	N / PI0500										
	BW0500B0	N / PI0500	N / PI0500										
	BW0511B0			N / PI0511	N / PI0511	N / PI0511							
	BW0511BP			PI0511	PI0511	PI0511							
	BW0511CP			N / PI0511	PI0511	N / PI0511							
	BW0500T0						N / PI0500	N / PI0500	PI0580	PI0580			
	BW0500TM						N / PI0500	N / PI0500	PI0580	PI0580			
	BW0588T0								N / PI0588	N / PI0588			
	BW0588TM								N / PI0588	N / PI0588			
	BW1022A0										N / PI1022		
	BW1033A0											N / PI1033	PI1033
	BW1033CP												N / PI1033

N = PI non necessaria

N = PI not necessary

N = PI nicht erforderlich